



BITL

Bangladesh International Tutorial Limited
start a legacy, leave a legacy

SPECIAL HOME WORK FOR THE UNEXPECTED CLOSURE

CLASS VII B2

BIOLOGY

WEEK 1

DAY 1:

- Review the chapter 5: Breathing and Respiration

DAY 2:

- Complete worksheet 1: Respiratory System

DAY 3:

- Review chapter 6: Blood and Circulation (page 78-83)
- Learn worksheet 2: Cardiac Cycle

WEEK 2

DAY 4:

- Complete worksheet 3: The Heart and Blood Circulation

DAY 5:

- Review pages 84-86
- Complete worksheet 4 in your homework copy: Q/A

DAY 6:

- Read and learn from pages 87-93

WEEK 3

DAY 7:

- In an A4 size paper draw and describe the three different types of blood cells in our blood

DAY 8:

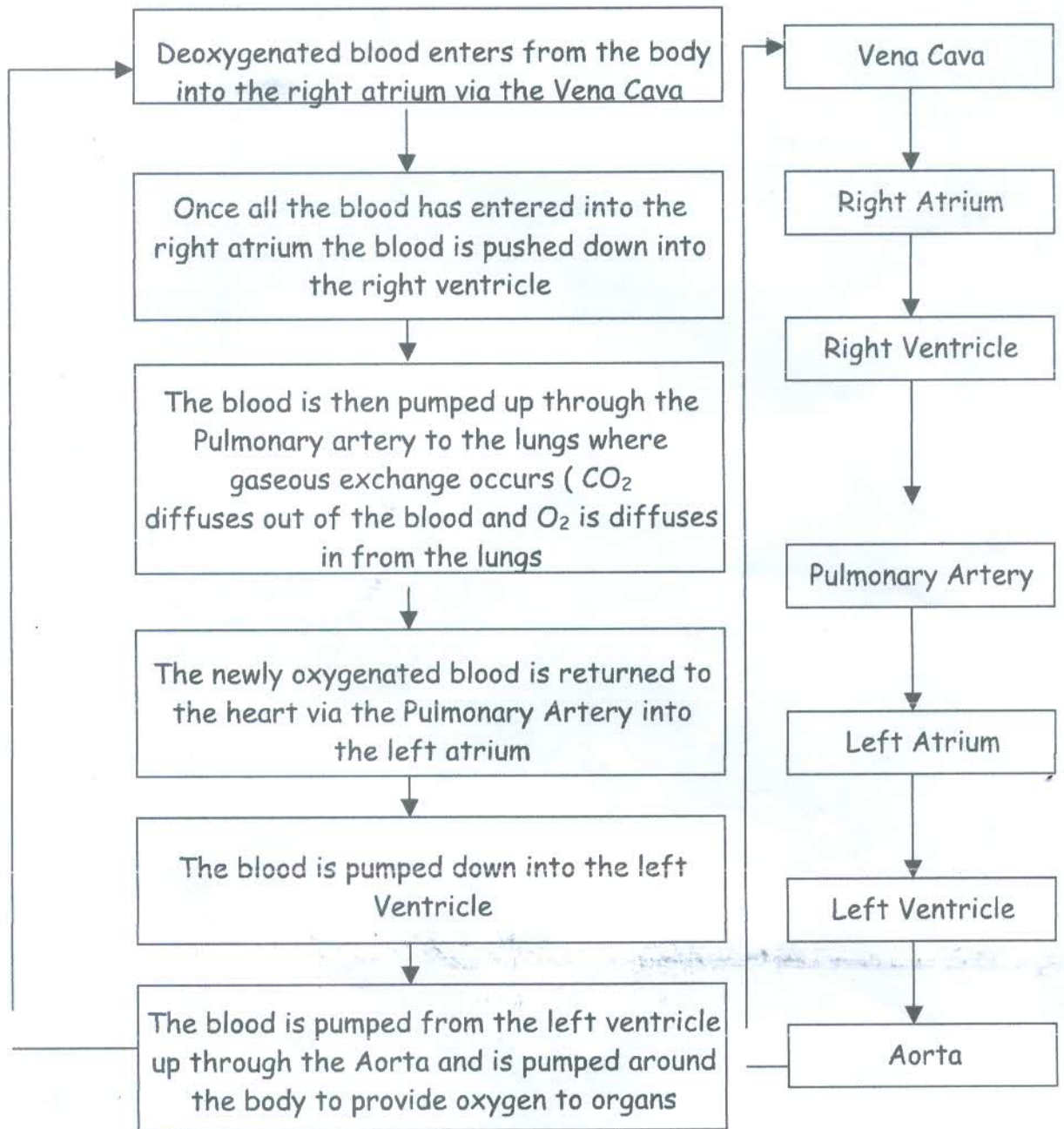
- Complete exercise from page 94 in the copy

DAY 9:

- Complete exercise from page 95 (Q 5-7) in the copy

Nurul Islam
18.03.2020

CARDIAC CYCLE

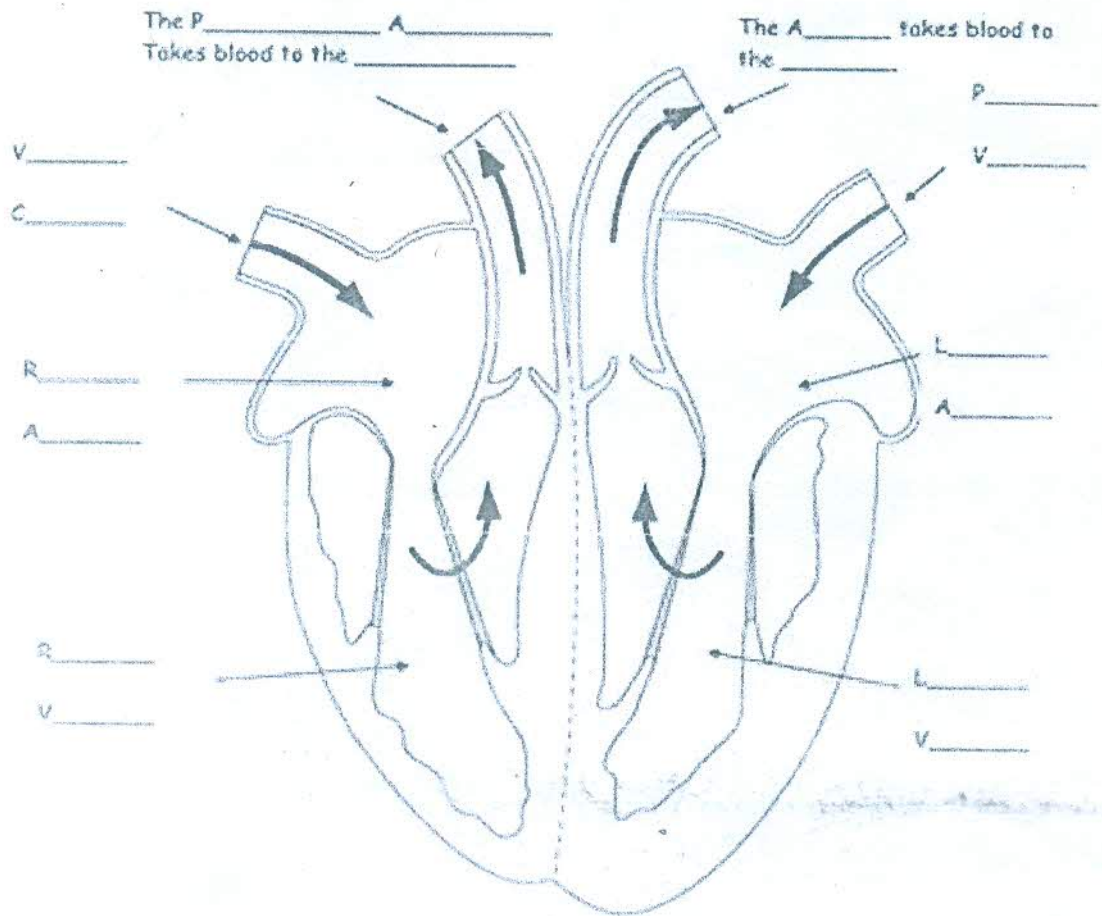


Worksheet 3

Deoxygenated blood

Oxygenated blood

THE HEART



The heart is made out of _____ Muscle.
 It is a double _____ that squeezes the blood around the _____
 and to the _____. The _____ side pumps blood to the lungs to pick
 up _____. The _____ side pumps blood around the rest of
 the body.

RIGHT, LEFT, CARDIAC, BODY, PUMP, LUNGS, OXYGEN



BITL 
Bangladesh International Tutorial Limited
start a legacy, leave a legacy

CLASS VII BIOLOGY

Chapter: 6

Blood and Circulation

Answer the following questions in your H.W. copy

1. Write the definition

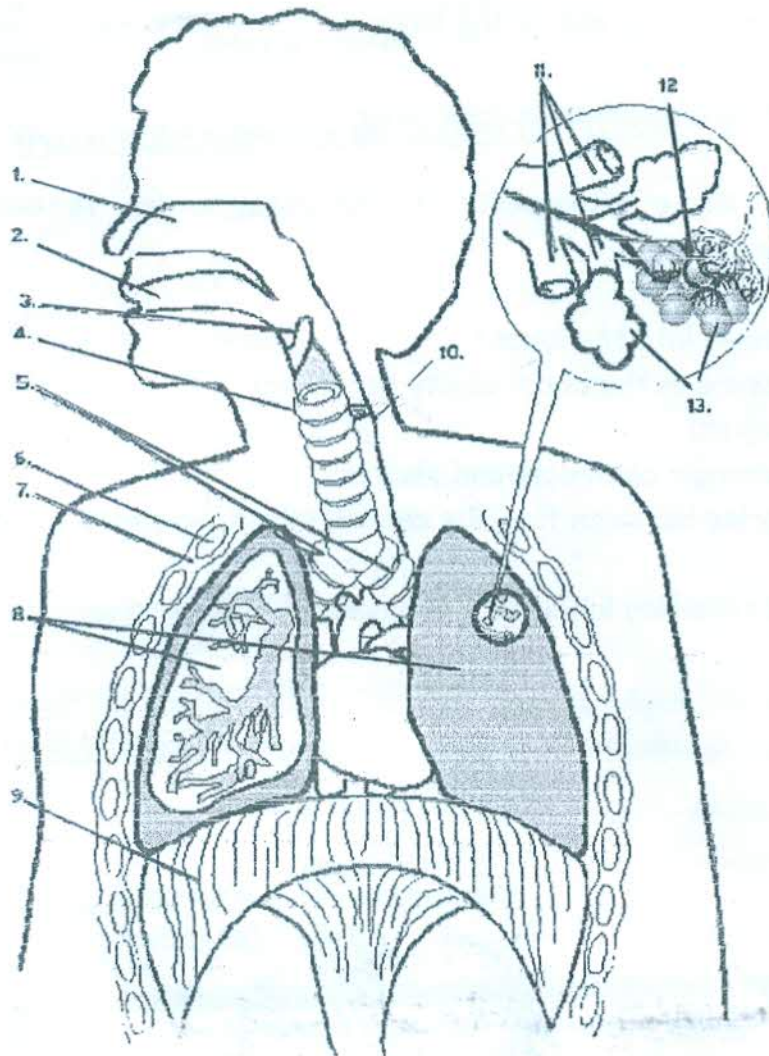
3x2=6

- A) Thrombosis
- B) Angina
- C) Cardiac Arrest

2. List the risk factors associated with heart diseases and how to prevent them. (4+5)=10

Respiratory System Worksheet 1

1. Label the diagram of the respiratory system below:



2. List the structures below in the order in which air passes them as it travels from the nose to the lungs.

Alveoli, bronchi, bronchioles, larynx, pharynx, trachea

3. How are dust particles that enter the respiratory system in the air expelled?

4. Add the correct term from the list below to the following descriptions

diaphragm, pharynx, expiration, alveoli, trachea, epiglottis, palate, bronchioles

a. Smallest respiratory passageway

e. Stops food from going the wrong way

f. Both air and food pass through this

g. The movement of air out of the lungs

h. The main muscle involved in inspiration

5. Arrange these statements in the right order to describe inspiration (inhalation).

___ Air is drawn into the lungs

___ Air pressure in the chest cavity decreases

___ Lungs expand

___ The diaphragm contracts and flattens

___ The muscles between the ribs contract to move the ribs up and out

6. Add the following labels to the diagram of the lung alveolus, below

alveolus, area of high oxygen concentration, area of high carbon dioxide concentration, movement of oxygen, movement of carbon dioxide

