

Biology
Class-VII
Worksheet-2

Q1) What are the risk factors which could lead to coronary heart disease?

Q2) What can be done to avoid coronary heart disease?

Q3) What is blood transfusion?

Q4) What is the blood made of?

Q5) How many types of WBC (White Blood Cell) are there and how do they protect our body?

Q6) What is the function of Hemoglobin in the blood?

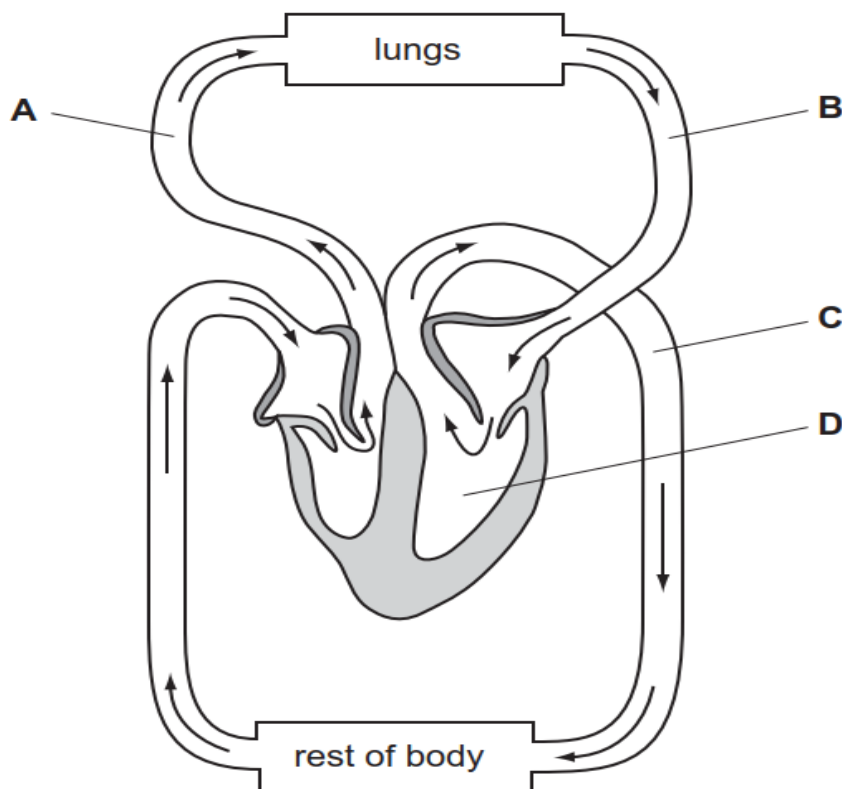
Q7) Describe the structure of RBC (Red Blood Cell) and how does it help in their function?

Q8) Describe the structure and function of capillaries?

Q9) What is tissue fluid and what is its function?

Q10) What is systole and diastole and how these help in the circulation of blood?

Youtube Link : <https://www.youtube.com/watch?v=CWFyxn0qDEU>



Label the Diagram